

# Oracle Hyperion Cloud Update

Updates for Planning, Close and Essbase

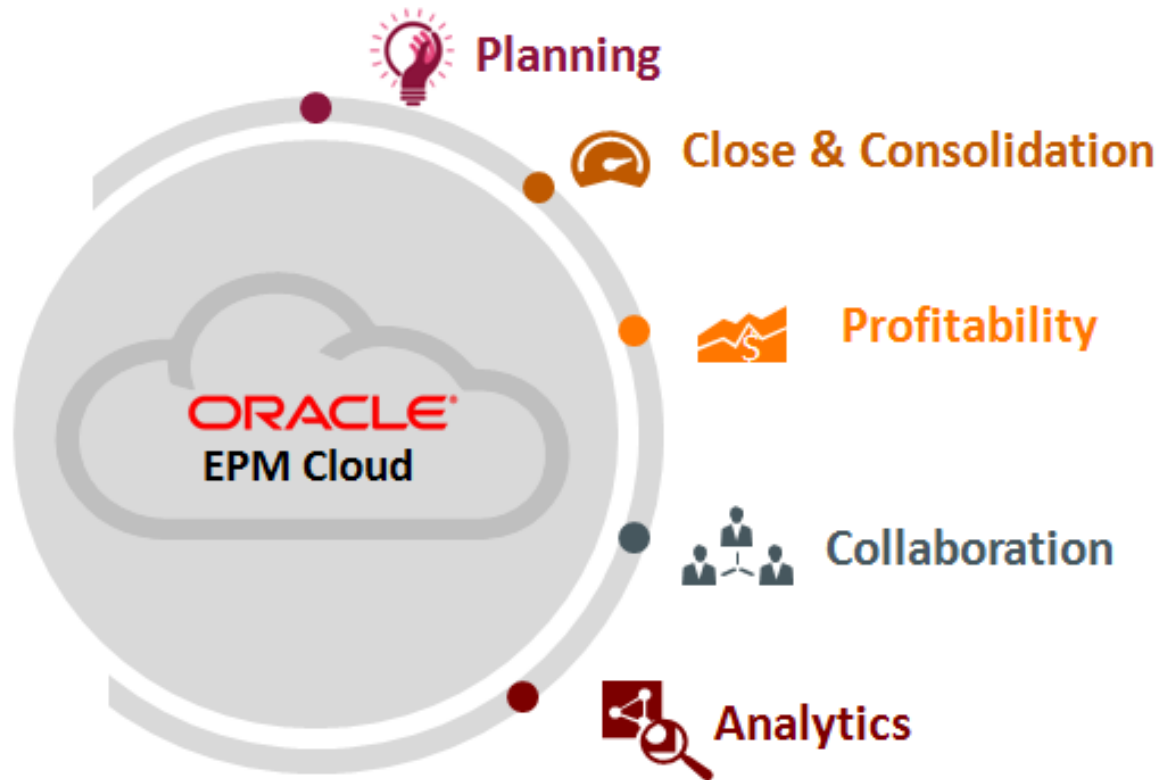
Scott Wandel, Master Principal Sales Consultant

February 19, 2016

**ORACLE®**

**ORACLE®**  
**HYPERION**

# The Oracle EPM Cloud



- ✓ **COMPREHENSIVE** - The most cloud-based complete Enterprise Performance Management solution available
- ✓ **ENTERPRISE** - Tailor made for both corporate finance and operational needs.
- ✓ **ALIGNED** - Empowers users with independence while ensuring

# Oracle EPM Cloud



## Financial Close Suite

Consolidation & Reporting   Account Reconciliations   Tax Provision   Operational Transfer Pricing   Supplemental Data Mgmt   Process Management

## Planning Suite

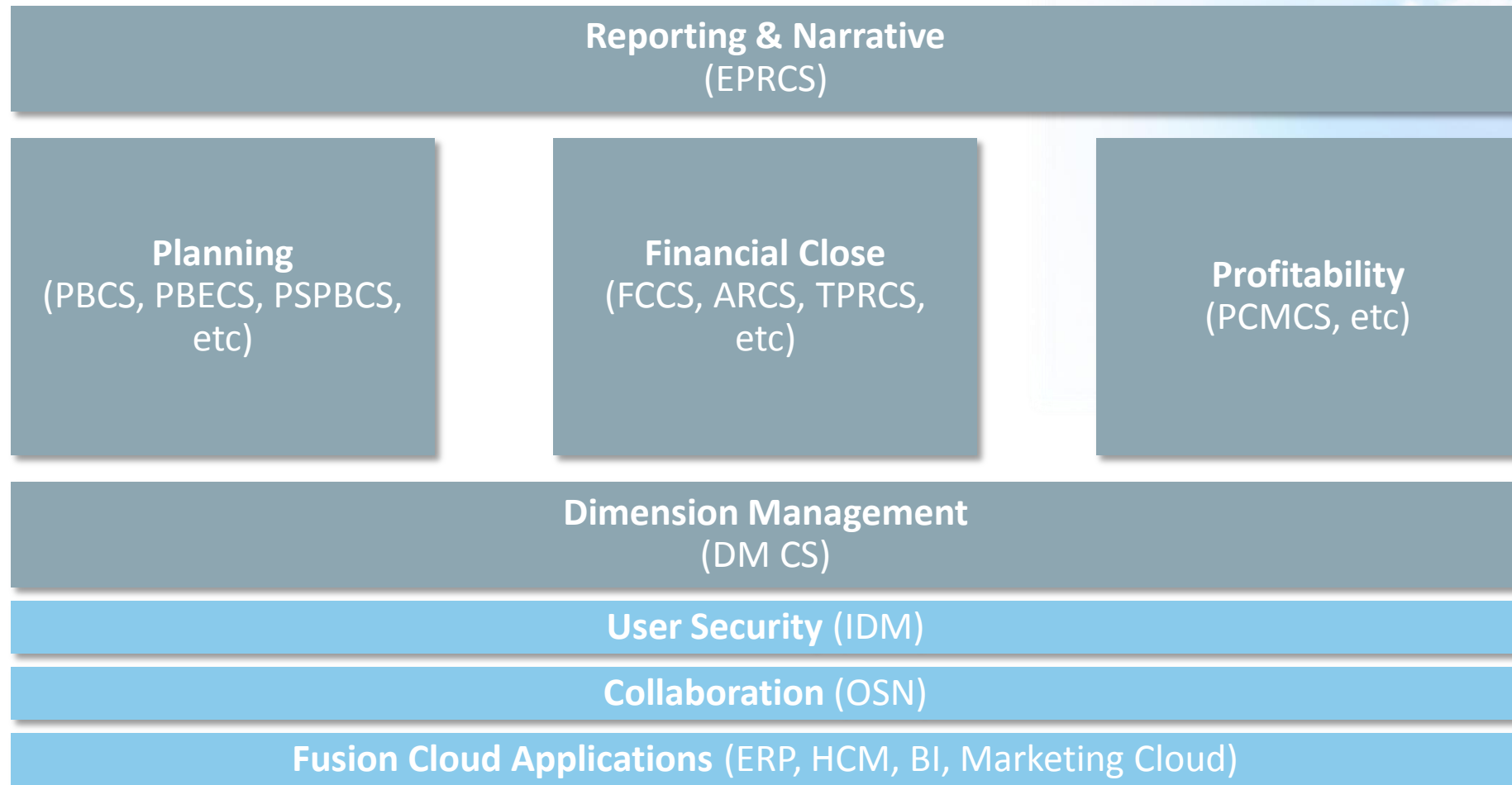
Planning and Forecasting   Predictive Planning   Workforce Planning   Capital Asset Planning   Project Financial Planning   Fin. Statement Modeling

## Data Management

Enterprise Hierarchy Management   Pre-Built Source System Integration   Drill-Back to Source   Data Governance   Data Sync between Applications

# The EPM Cloud

## Business Process Marketecture



# Oracle EPM Cloud Roadmap



## Oracle EPM Cloud is **Comprehensive**

1. Planning & Budgeting Cloud Service
2. Enterprise Performance Reporting Cloud Service
3. Enterprise Planning & Budgeting Cloud Service
4. Account Reconciliation Cloud Service
5. Essbase Cloud Service
6. Financial Consolidation & Close Cloud Service
7. Profitability & Cost Management Cloud Service
8. Tax Provisioning & Reporting Cloud Service
9. Dimension Management Cloud Service

General Availability

General Availability

1H CY2016

1H CY2016

1H CY2016

2H CY2016

2H CY2016

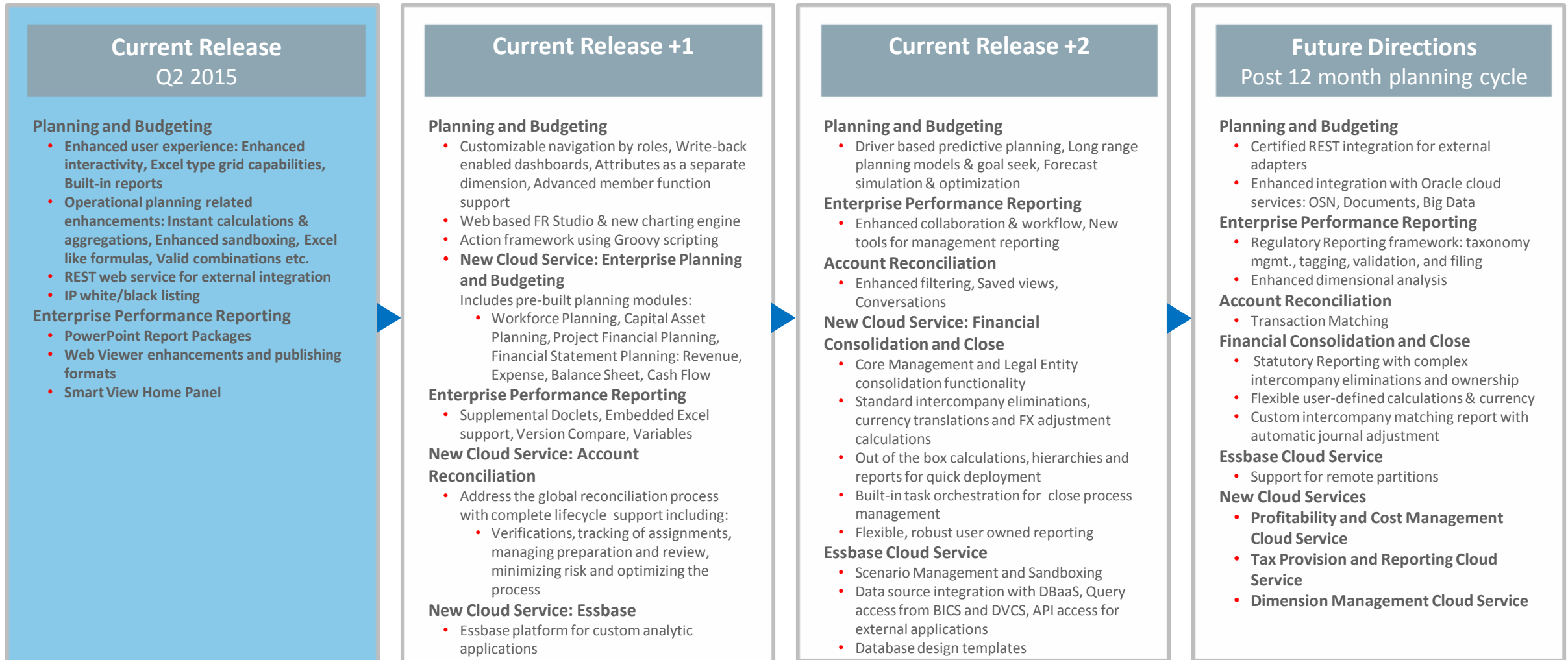
2H CY2016

2H CY2016



# Oracle Applications: Current Release and Roadmap

## Oracle EPM Cloud



The above is intended to outline our general product direction. It is intended for information purposes only, and may not be incorporated into any contract. It is not a commitment to deliver any material, code, or functionality, and should not be relied upon in making purchasing decisions. The development, release, and timing of any features or functionality described for Oracle's products remains at the sole discretion of Oracle Corporation.

# Enterprise Planning & Budgeting Cloud



Financials



Workforce



Capital



Projects

PBCS

The Oracle Enterprise Planning & Budgeting Cloud is the only solution on the market that strikes the perfect balance between end user flexibility and centralized curation.

## Value Out-of-the-Box

- **Best-Practice Planning** that can be easily deployed in consumable increments
- **Upgradable** while maintaining configurability
- **Empowering the End User** via configuration wizards

# Best Practice Planning... Out-of-the-Box



## Financials

Integrated Driver-based Planning for the Income Statement, Balance Sheet, & Cash Flow



## Projects

Bridging the Gap Between Project Planning Systems and the Financial Planning Process



## Workforce

Headcount & Compensation Planning to link Financial Plans with the Workforce

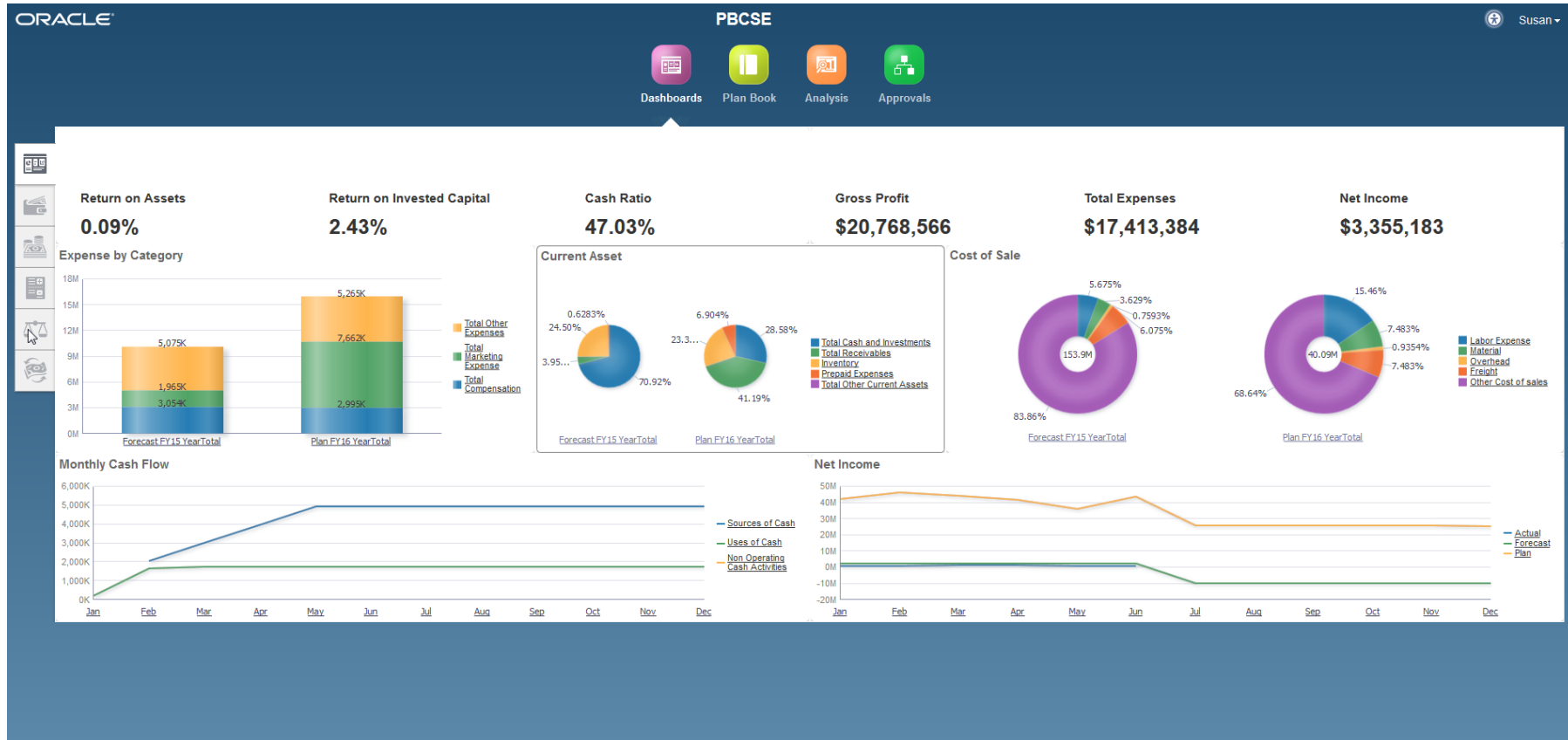


## Capital

Planning for the Long-term impact of Capital Assets on Financial Plans



# Best Practice Planning Out-of-the-Box



- Out-of-box content
  - Drivers & KPIs
  - Calculations
  - Forms
  - Reports
  - Dashboards
- Best practices built-in
- **Configurable framework for Partner Enrichments**
- Automatically Upgraded by Oracle

# Essbase – History of Innovation

## Essbase - 20 Years of Innovation

### The Good Old Days

- “Excel on Steroids” - the first Multidimensional Database
- Powerful capabilities for business users
- Custom consolidations with procedural scripts
- Multi user Read/Write access
- First to offer an Excel Add In to a dimensional data model
- First to offer Drill and Pivot capabilities in Excel

### Departments to the Enterprise

- Shared Services
- Strong security and SSL
- Faster and bigger dynamic models with the introduction of ASO
- Clustering and High Availability
- Smartview with support for all Office apps

### The In-Memory and Exalytics

- Pure In-Memory user interaction with persisted backend for scale and recoverability
- Fused two MDD engine methodologies into a single, Best of Breed, Hybrid

### 12c and Cloud Transformation

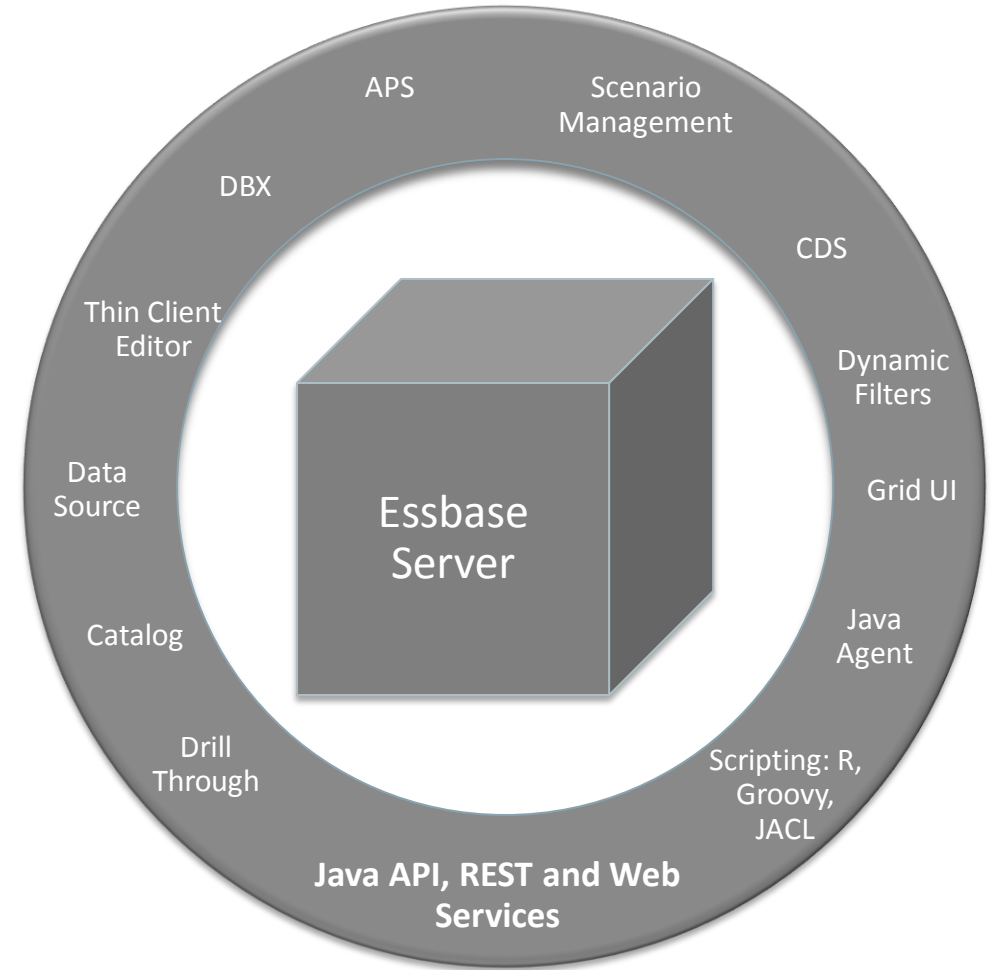
- Completely redesigned Java based architecture
- Multi-tenant platform
- From Excel to deployment in seconds
- Expanded the traditional dimensional model with new artifacts

# Essbase Cloud Service Features

- Access to Essbase capabilities
    - BSO/ASO/Hybrid databases
    - Flexible dimensionality
    - Dynamic formulas
    - Calc scripts
    - Data uploads
  - Smartview connectivity
  - Browser based UI
  - Data migration to BICS and DVCS
- Cloud Only features
    - Sandboxing
    - Scenario management
    - Design by Example templates
    - Excel Import/Export
  - Administration
    - Database statistics
    - Manage connections
    - Locks
    - Security

# Proven Value, Redesigned for the Cloud

- Re-architecture of Essbase for the Cloud
  - Designed to support higher concurrency and faster recoverability
  - Eliminated security bottlenecks
  - Designed for multi-tenancy
- Unified middleware layer for all services
- Based on industry standards for ease of integration













# Powerful Addition to the Essbase Platform

- Complete platform for custom applications
- Sandboxing and Scenario Management
  - Create private copy data for what-if and sensitivity analysis
  - Refresh from the base data or merge the Sandbox into it
  - Apply lightweight workflow to scenarios and submit approvals
  - Assign Approver and Viewer type roles

The top screenshot shows the 'Edit Scenario: First\_Pass\_High' form. It includes fields for Name (First\_Pass\_High), Owner (epm\_default\_cloud\_admin), Priority (Medium), Status (In Progress), Cube (Sample\_SJL.Basic), and Sandbox (sb0). The Description field contains the text 'This is a first crack at a high estimate...'. The form also displays dates for Due Date (Nov 26, 2015 1:34:54 PM), Creation Date (Nov 18, 2015 1:35:59 PM), Submitted Date, Applied Date, and Refreshed Date. There are buttons for 'Save and Close' and 'Cancel'.

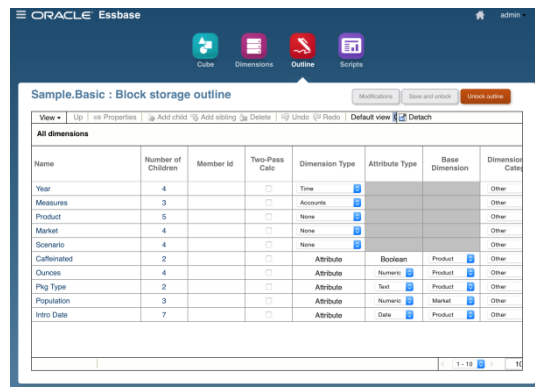
The bottom screenshot shows the 'Scenarios for cube: Sample\_SJL.Basic' table. It includes a filter section with 'By Role: All' and 'By Status: All'. The table has columns for Name, Owner, Due Date, Priority, Status, Sandbox, and Show changes. The table lists five scenarios: First\_Pass\_High, First\_Pass\_Neutral, First\_Pass\_Low, 2nd\_Pass\_High, and Currency\_Hedge. Each scenario has a corresponding owner, due date, priority, status, and sandbox.

Name	Owner	Due Date	Priority	Status	Sandbox	Show changes
First_Pass_High	epm_default_c	Nov 26, 2015 1:34:54 PM	Medium	In Progress	sb0	 
First_Pass_Neutral	epm_default_c	Nov 26, 2015 1:34:54 PM	High	In Progress	sb1	 
First_Pass_Low	epm_default_c	Nov 26, 2015 1:34:54 PM	Medium	In Progress	sb10	 
2nd_Pass_High	epm_default_c	Nov 26, 2015 1:34:54 PM	Low	In Progress	sb11	 
Currency_Hedge	epm_default_c	Nov 26, 2015 1:34:54 PM	High	In Progress	sb12	 

# New, Quicker, Ways to Get Things Done

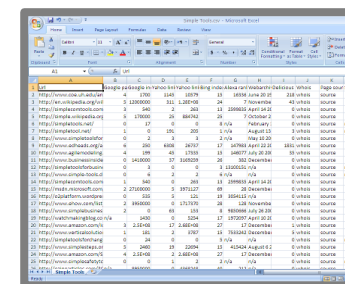
- **New UI for design and management**

- New database management and outline editor tools
- Guided Essbase database creation
- Support for database migration from on-prem deployments
- Administration capabilities



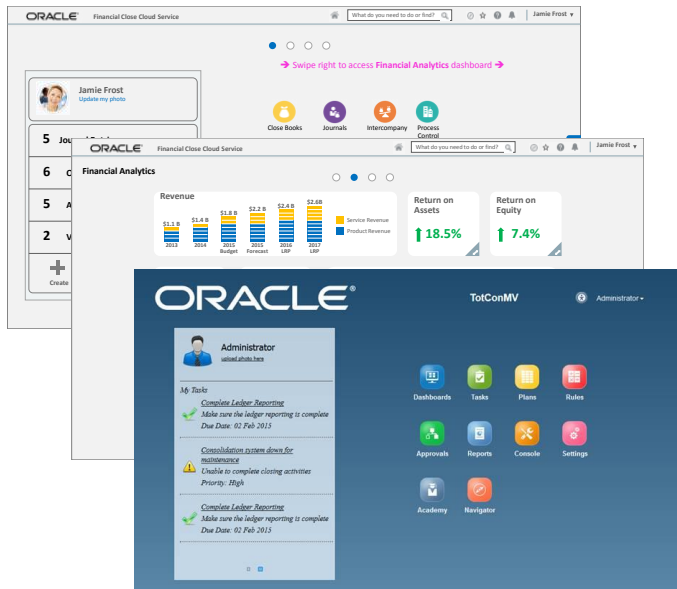
- **Tool-less approach for faster deployments**

- Excel to Cloud in seconds
  - Automated database creation based on customer spreadsheet
- Zero learning curve, no Essbase skills needed
  - Modify the cube design can also be done from Excel





# Financial Consolidation & Close Cloud Service



- Address Management and Legal Entity consolidation needs for a broad spectrum of customers
- Significant out of the box functionality with limited need for customization (no scripting)
- Out of the box calculations, hierarchies and reports for quick deployments
- Built in task orchestration for management of overall process
- Flexible, robust user owned reporting
- Fully integrated with the EPM Cloud

# FCCS Benefits

- Simplified Tablet User Interface
- Native dashboarding and analysis
- Dynamic out-of-box calculations with limited need for customization (**no scripting**)
- Built-in Balance Sheet Movement Translations with FX / CTA Calculations
- Simplified Consolidation Dimension for easy audit
- Predefined dimensions for detailed analysis
- Automated Cash Flow
- Automation/Lights out processing
- **Powerful close orchestration and detail data collection**
- **Supporting “social interactions” around close and consolidation**

# FCCS Functionality in first release

- Consolidation
  - Predefined dimensions with built-in Financial Intelligence
  - Flexible application configuration with pre-built forms & reports
  - Standard consolidations & eliminations
  - Currency translations and FX adjustment calculations
  - Built-in KPI ratio analysis
  - Custom calculations using member formula
  - Automated Cash Flow
  - Data source detail tracking with drill through capability
- Multi-GAAP support
- Approvals
- Journal entry with approval workflow
- Intercompany matching
- Data audit
- Close Calendar
  - Task Management
  - Workflow
- Supplemental Schedules
  - Data Collections
- FCCS Dashboard

# EPM Cloud for Financial Close: Roadmap

EPM Cloud Offering	Target Date
Account Reconciliation Cloud Service (ARCS)	Q4 FY16
Financial Consolidation and Close Cloud Service (FCCS)	Q1 FY17
Tax Provision and Reporting Cloud Service (TPRCS)	1H FY17

A young man with short brown hair is in the foreground, looking thoughtfully at the camera with his hand resting on his chin. He is holding a dark pen. In the background, two other students are visible but out of focus: a woman with blonde hair and a man in a purple shirt. The setting appears to be a classroom or office.

# Questions?